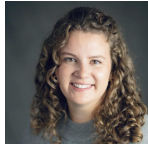




WELCOME TO SUMMER DAY CAMP

MEET THE SCHOOL AGE PROGRAM TEAM



MADDIE LACOUNT
SENIOR SCHOOL AGE DIRECTOR

EMERSON
HARRY SPENCE
HINTGEN



KYLEE JOSTAD
SCHOOL AGE DIRECTOR

EAGLE BLUFF
IRVING PERTZSCH
NORTHERN HILLS



DANI HARTMANN
SCHOOL AGE DIRECTOR

EVERGREEN
SAND LAKE
VIKING

HOURS OF OPERATION 6:30 AM (6:15 AM HOLMEN)-6:00P P.M.

PROGRAMMING WE OFFER

- PHYSICAL ACTIVITIES
- ARTS AND CRAFTS
- S.T.E.M (SCIENCE, TECHNOLOGY, ENGINEERING, AND MATH)
- SOCIAL AND EMOTIONAL LEARNING
- NUTRITION EDUCATION
- Y ON THE FLY
- GUEST SPEAKERS
- COMMUNITY PARTNERSHIPS

WE ARE A FEE-BASED PROGRAM. TO ENSURE ACCESS FOR ALL, THE YMCA OFFERS FINANCIAL ASSISTANCE AND ACCEPTS WISCONSIN SHARES STATE ASSISTANCE FOR THOSE WHO QUALIFY.

DAY CAMP DAILY SCHEDULE:

- 6:30-8AM: CENTERS/STATIONS
- 8:00- 8:30: BREAKFAST
- 8:30-9:15: RECESS
- 9:15-9:30: MORNING MEETING
- 9:30-11:30: CENTERS/STATIONS
- 11:30-12:00: LUNCH
- 12:00-12:30: RECESS
- 12:30-3:00: FIELD TRIP OR CAMPS
- 3-3:30: SNACK
- 3:30-4:15: QUIET READING TIME
- 4:15-5:00: RECESS
- 5:00-6:00: CENTERS/STATIONS

FOR ENROLLMENT QUESTIONS CONTACT:
HOLLY KLEINER
CHILDCARE ACCOUNTS SPECIALIST



For more information regarding our program visit us online:

<https://www.laxymca.org/summer-care>